

# HARBOUR POINT MARINA

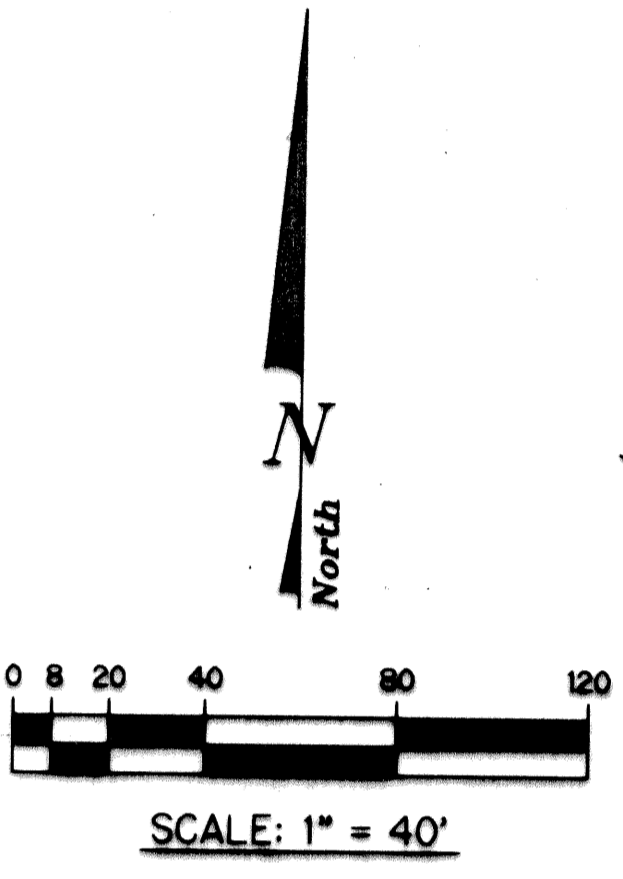
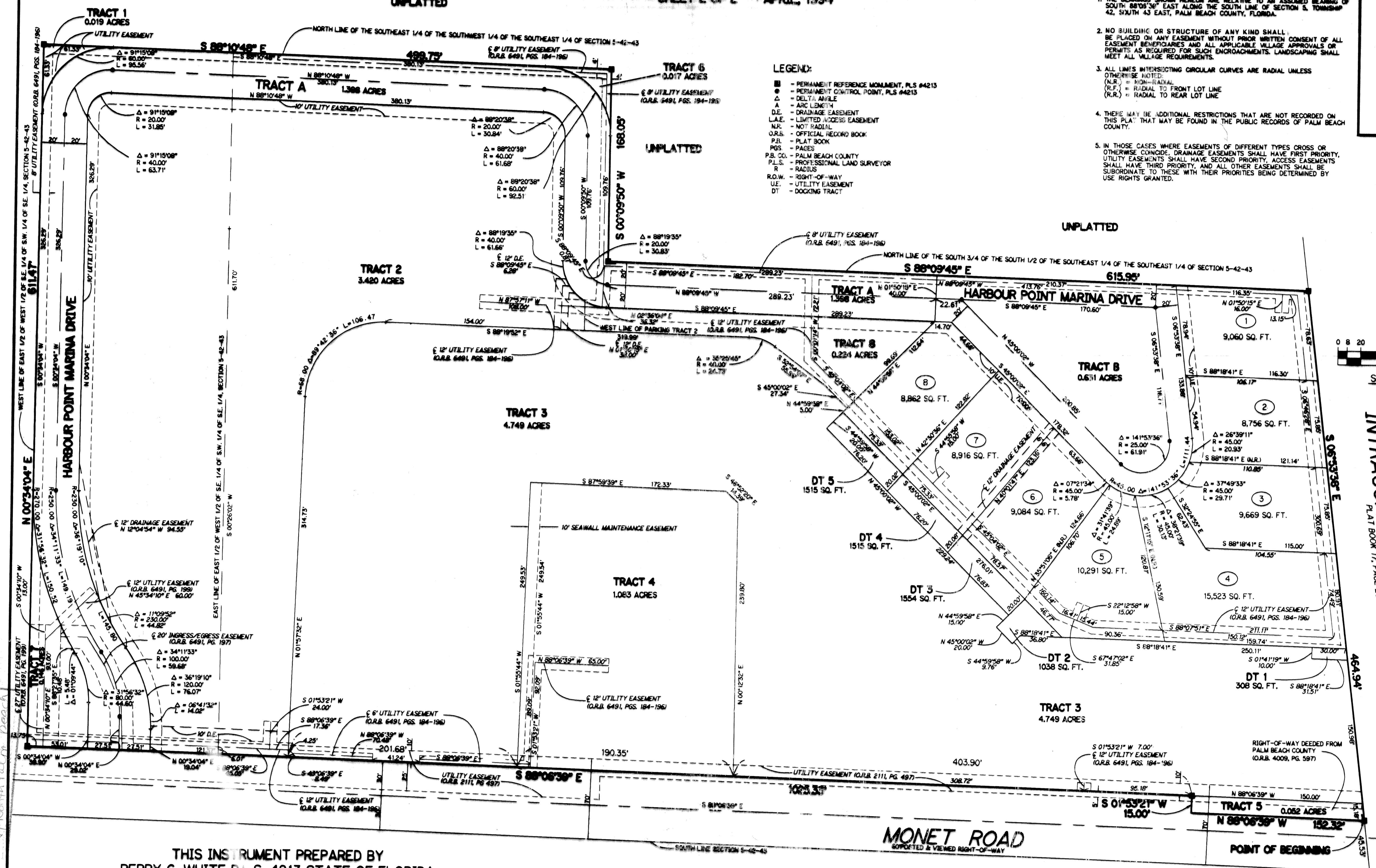
LYING WITHIN THE SOUTHEAST ONE-QUARTER OF SECTION 5, TOWNSHIP 42 SOUTH, RANGE 43 EAST VILLAGE OF NORTH PALM BEACH, PALM BEACH COUNTY, FLORIDA  
SHEET 2 OF 2 APRIL, 1994

### SURVEYOR NOTES:

1. THE BEARINGS SHOWN HEREON ARE RELATIVE TO AN ASSUMED BEARING OF SOUTH 88°03'30" EAST ALONG THE SOUTH LINE OF SECTION 5, TOWNSHIP 42, RANGE 43 EAST, PALM BEACH COUNTY, FLORIDA.
2. NO BUILDING OR STRUCTURE OF ANY KIND SHALL BE PLACED ON ANY EASEMENT WITHOUT PRIOR WRITTEN CONSENT OF ALL EASEMENT BENEFICIARIES AND ALL APPLICABLE VILLAGE APPROVALS OR PERMITS AS REQUIRED FOR SUCH ENCROACHMENTS. LANDSCAPING SHALL MEET ALL VILLAGE REQUIREMENTS.
3. ALL LINES INTERSECTING CIRCULAR CURVES ARE RADIAL UNLESS OTHERWISE NOTED.  
(N.R.) = NON-RADIAL  
(R.F.) = RADIAL TO FRONT LOT LINE  
(R.R.) = RADIAL TO REAR LOT LINE
4. THERE MAY BE ADDITIONAL RESTRICTIONS THAT ARE NOT RECORDED ON THIS PLAN THAT MAY BE FOUND IN THE PUBLIC RECORDS OF PALM BEACH COUNTY.
5. IN THOSE CASES WHERE EASEMENTS OF DIFFERENT TYPES CROSS OR OTHERWISE COINCIDE, DRAINAGE EASEMENTS SHALL HAVE FIRST PRIORITY, UTILITY EASEMENTS SHALL HAVE SECOND PRIORITY, ACCESS EASEMENTS SHALL HAVE THIRD PRIORITY, AND ALL OTHER EASEMENTS SHALL BE SUBORDINATE TO THESE WITH THEIR PRIORITIES BEING DETERMINED BY USE RIGHTS GRANTED.

### LEGEND:

- - PERMANENT REFERENCE MONUMENT, PLS #4213
- - PERMANENT CONTROL POINT, PLS #4213
- Δ - DELTA ANGLE
- A - ARC LENGTH
- D.E. - DRAINAGE EASEMENT
- L.A.E. - LIMITED ACCESS EASEMENT
- N.R. - NON-RADIAL
- O.R.B. - OFFICIAL RECORD BOOK
- P.B. - PLAT BOOK
- P.G.S. - PAGES
- P.B. CO. - PALM BEACH COUNTY
- P.L.S. - PROFESSIONAL LAND SURVEYOR
- R - RADIUS
- R.O.W. - RIGHT-OF-WAY
- U.E. - UTILITY EASEMENT
- DT - DOCKING TRACT



INTRACOASTAL WATERWAY  
PLAT BOOK 17, PAGE 29

SUBDIVISION - Harbour Point Marina  
 BOOK 73  
 FLOOD ZONE -  
 QUAD # -  
 SE -  
 ZIP CODE -  
 PUD NAME - North Palm Beach

THIS INSTRUMENT PREPARED BY  
 PERRY C. WHITE P.L.S. 4213 STATE OF FLORIDA  
 LAWSON, NOBLE AND ASSOCIATES, INC.  
 ENGINEERS PLANNERS SURVEYORS  
 WEST PALM BEACH, FLORIDA

POINT OF COMMENCEMENT  
 SOUTHEAST CORNER OF SECTION 5,  
 TWP. 42 S., RGE. 43 E.